

## Model IPS-4 Integrated Process Spectrophotometer

### Features And Benefits

- Measures up to eight wavelengths
- Low cost of ownership
- Lamp life greater than two years
- No moving parts
- IP65, weatherproof
- Integrated, customizable sample system
- Fast Ethernet and MODBUS communications



General Purpose IPS-4

### The Need

Today's chemical producers and consumers are under tremendous pressure to cut costs, lower maintenance expenses, and improve product quality. In order to meet these demanding objectives, process engineers and operators need analytically capable and reliable process analyzers which require minimal maintenance and operator intervention. The analyzers also need to be easy to use and capable of communicating in a wide variety of ways. It is also a benefit if the

analyzer is durable enough to be installed in outdoor, wash-down, hazardous, and other environmentally harsh locations.

### The Solution

AMETEK's Western Research® IPS-4 is a huge step forward in capability and reliability for process spectrophotometers. Using the most modern electronics and diode array technology, the IPS-4 is engineered to perform a wide variety of liquid and gas analyses using UV-VIS spectroscopy.

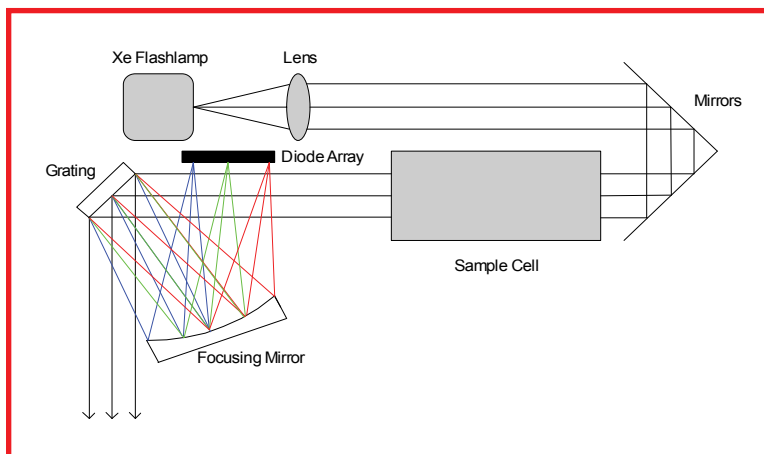
### Analytical Performance

The IPS-4 is capable of detecting, quantifying, and compensating for multiple chemicals of interest and interfering species. Up to eight components of interest can be measured simultaneously through the combination of a modern, diode array-based optical system with our proprietary process-ready electronics.

This combination offers many advantages such as no moving parts, a high signal-to-noise ratio, minimized stray light effects, fast and full spectral acquisition, and wide dynamic range. These traits help to make the IPS-4 a highly capable process analyzer.

### Optical System

The IPS-4's optical system is designed to increase reliability and dramatically reduce the need for routine maintenance, thereby drastically cutting its cost of ownership. The lamp used in the optical system is a xenon flash lamp which has an amazing >2 year expected life. Use of the diode array and fixed optical bench means that



Schematic of the IPS-4's Optical System

there is no filter wheel or motor to maintain, no optical filters to replace, and no optical couplings to align. The resulting optical system is small, insensitive to mechanical tolerances, insensitive to movement, and free of moving parts.

The AMETEK designed electronics are engineered to withstand harsh outdoor, industrial environments. They possess excellent temperature stability, reliability, and a host of self-diagnostic and predictive maintenance capabilities. The combined result of the IPS-4's design is a spectrophotometer with high reliability and a minimal need for routine maintenance.

**Interface Options**

Manufacturing facilities have a wide variety of communication needs from their process analyzers. To meet the varied needs of our customers, we have equipped the IPS-4 with numerous analog and digital communications capabilities. A detailed, multi-line display along with a 22-key keypad provides the primary local indications. The keypad is a stainless steel, piezo-electric device which is the ultimate in durability and reliability. The

pixel-based display is detailed enough to allow for a selection of display language. The analyzer also communicates through a variety of analog signals, alarm contacts, and three types of digital communication.

Digital communication options include a RS-232, RS-485 with MODBUS RTU protocol, and a built-in Fast Ethernet port.

**Wide Environmental Tolerance**

Process analyzers must often be installed in harsh environments. Unlike other process analyzers, the IPS-4 is designed to handle most environmental challenges without the need for additional protection or prohibitively expensive shelters.

The IPS-4 is supplied in an IP65 (NEMA4 optional) enclosure. This enclosure is more than capable of handling even wash-down environments without allowing water or dust to ingress. The standard enclosure is a painted steel chassis although a stainless steel chassis is available.

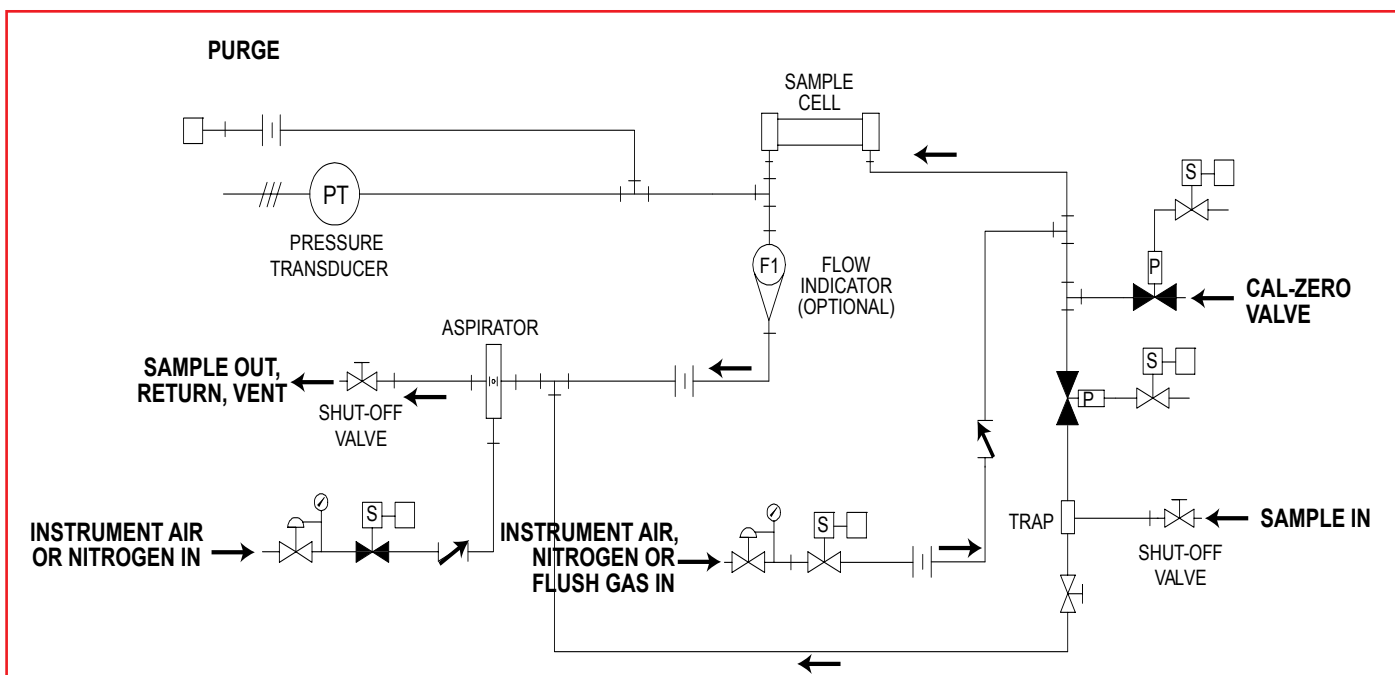
When installed outdoors, the IPS-4 will tolerate ambient temperatures from -20° to 50°C (-4° to 122°F) without external heating/cooling. When installed indoors, the analyzer

takes up minimal space as it is designed with a very narrow profile. The width of the IPS-4 has been kept to only 78 cm (<31 inches) to minimize the amount of precious wall space it occupies. This narrow width is maintained even when a wide range of custom sample handling and conditioning systems are integrated into the IPS-4's sample cell enclosure.

**Custom Sampling Systems**

The IPS-4 is engineered to be a fully integrated, turn-key solution to your specific process analysis need. AMETEK will engineer a sample handling and conditioning system to meet the requirements of your sample fluid and application. Automatic zero and span fluid injection, corrosion-resistant materials, filtration, pumps or eductors, and heated sample lines are a few of the customizations AMETEK will engineer into the IPS-4 to meet your application requirements.

The IPS-4 may be the solution you need to improve the quality and efficiency of your process. Contact your AMETEK Process Instruments salesperson to discuss your specific application today.



Flow diagram of an optional gas sample system



IPS-4 equipped with optional gas sampling system and optional sample system heater

## Performance Specifications

**Photometric Range:** 0 to 3.0 AU;  
Minimum Full Scale is 0.1 AU at  
specified precision

**Analyzer Range:** ppm to 100%  
depending upon specific application

**Measurement Precision:** <1% of full  
scale range

**Zero Drift:** <1 % of full scale range  
over 24 hours

**Linearity:** <1% of full scale range

**Response Time:** <2 seconds for  
the photometric measurement. Total  
system response depends upon  
sample system.

**Components:** Up to eight components  
can be measured

### Inputs:

2 non-isolated analog inputs (0-5V,  
0/4-20mA)

2 optically isolated discrete DC  
inputs

22 key piezoelectric keypad

### Outputs:

265 x 64 pixel vacuum fluorescent  
display with multi-lingual capability  
(Language options include: English,  
Spanish, French, German, Russian.  
This is a partial listing. Contact  
AMETEK for more information.)

2 isolated analog outputs (0/4-20  
mA) (Two additional analog outputs  
optional)

8 dry relay contacts (NO, 100VA,  
240 V)

RS-485 isolated (supports  
MODBUS RTU)

RS-232 non-isolated

Fast Ethernet (IEEE802.3)

### Sample System Limits

**Sample Pressure:** Up to 100 barg  
(1450 psig) for some configurations

**Oven Temperature:** Oven heater  
capable of maintaining 150°C  
(300°F)

### Utility Requirements

#### Electrical:

120 VAC (105 to 132 VAC), 47 to 63 Hz  
240 VAC (209 to 264 VAC), 47 to 63 Hz

#### Power Consumption:

< 700 W with oven heater  
< 300 W without oven heater

**Instrument Air:** 4.8 – 6.9 barg (70  
- 100 psig)

### Environmental Requirements

**Ambient Temperature:** -20 to 50°C  
(-4° to 122°F) without external heating  
or cooling

### Ingress Protection:

IP65 and NEMA 4 for stainless steel  
enclosure

IP65 for painted enclosure

**Enclosure material:** Painted steel,  
stainless steel optional

### Physical Dimensions

(W x H x D): 78 cm x 53 cm x 30 cm  
(30.7" x 20.9" x 11.8")

Weight: 66 kg (145 lb) for base  
system

### Approvals and Certifications

NEC/CEC General Safety  
requirements, CE & IP65, type 4

Standard General Purpose model:

NEC/CEC Class I Div 2 A, B, C,  
D; Class II Div 2 F & G; Class III

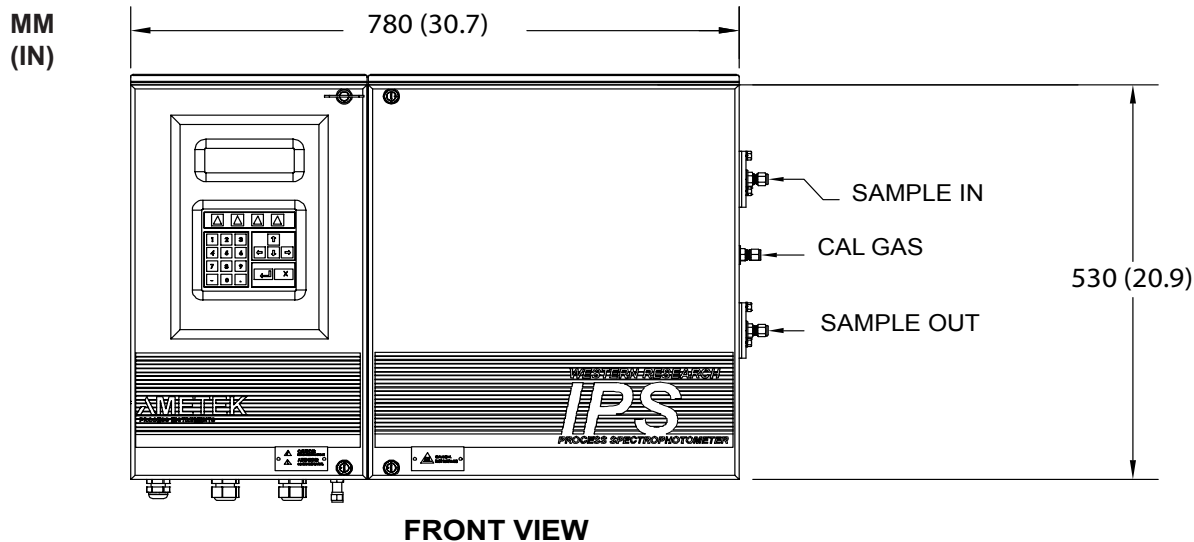
Ex/AEx nRm IIC T3 (T6 w/o  
heater) (pending)

Zone 1/Div 1 option:

NEC/CEC Class I Div 1 A, B, C,  
D; Class II Div 1 F & G; Class III  
(pending)

Ex/AEx nRm IIC T3 (T6 w/o  
heater) (pending)

# Model IPS-4 Integrated Process Spectrophotometer



**FRONT VIEW**

*General Purpose Model Shown*



**PROCESS INSTRUMENTS  
WESTERN RESEARCH**

455 Corporate Blvd., Newark DE 19702  
Ph. 302-456-4400, Fax 302-456-4444

[www.ametekpi.com](http://www.ametekpi.com)



© 2007, by AMETEK, Inc.  
All rights reserved. Printed in the U.S.A.  
IPS-4 (02/20/07)

*One of a family of innovative process analyzer solutions from AMETEK Process Instruments.  
Specifications subject to change without notice.*

**SALES AND MANUFACTURING:**

**CANADA - Alberta**  
2876 Sunridge Way N.E., Calgary AB T1Y 7H2 • Tel: 403-235-8400, Fax: 403-248-3550

**USA - Oklahoma**  
2001 N. Indianwood Ave., Broken Arrow OK 74012 • Tel: 918-250-7200, Fax: 918-459-0165

**USA - Pennsylvania**  
150 Freeport Road, Pittsburgh PA 15238 • Tel: 412-828-9040, Fax: 412-826-0399

**WORLDWIDE SALES AND SERVICE LOCATIONS:**

**USA - Texas**  
Tel: 281 463 2820, Fax: 281 463 2701

**CHINA**  
Beijing / Tel: 86 10 8526 2111, Fax: 86 10 8526 2141  
Chengdu / Tel: 86 28 8675 8111, Fax: 86 28 8675 8141  
Shanghai / Tel: 86 21 6426 8111, Fax: 86 21 6426 7818

**FRANCE**  
Tel: 33 1 30 68 89 20, Fax: 33 1 30 68 89 29

**GERMANY**  
Tel: 49 21 59 91 36 0, Fax: 49 21 59 91 3639

**MIDDLE EAST - Dubai**  
Tel: 971 4 881 2052, Fax: 971 4 881 2053

**SINGAPORE**  
Tel: 65 6484 2388, Fax: 65 6481 6588