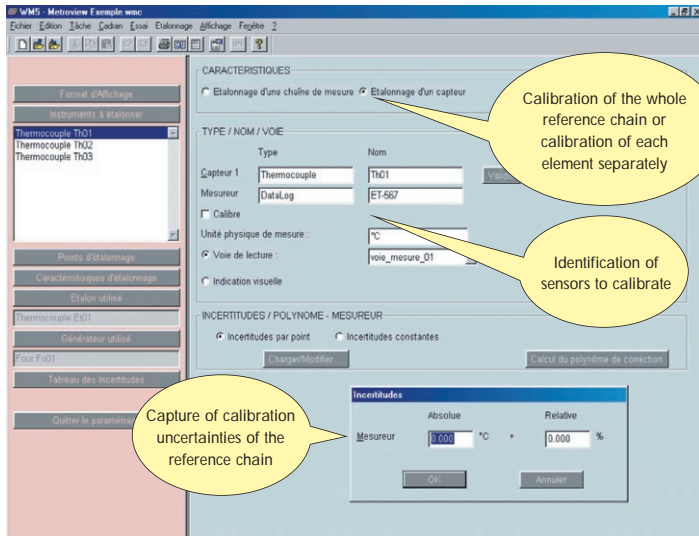


Software configuration

User friendly interfaces enable to configure all calibration parameters :

- Identification of sensors and measuring chains to be calibrated, with their maximum accepted errors.
- Instruments identifications included in the calibration system.
- Calibration set-points.

These information are saved in a configuration file.

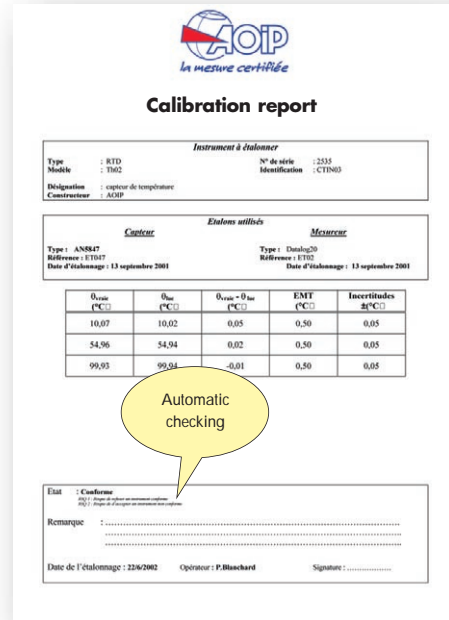


Calibration certificate

The software automatically edits the calibration certificates according to a model created under WORD 2000.

The operator is able to customize the report's layout (add a logo, a graphic...).

The software can also create a PDF file of the calibration certificate.

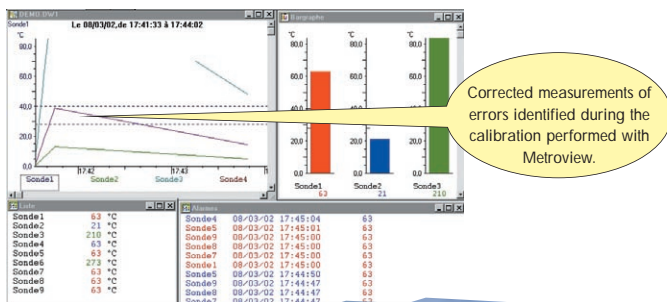


Calibration and automatic correction of measuring chains before their use

The manufacturing process specially in Pharmaceutical industries requires a rigorous metrology system and very accurate measurements.

The software Metroview allows the calibration of measurements chains equipped with temperature sensors and acquisition unit.

Calibration results are then transferred in the bulk memory of the acquisition unit and used in the aim to correct the measurements.



Supervision software



Data logger

General specifications

50 equipments (sensors, measuring chains, ...) may be calibrated simultaneously

Connections

RS232, 422, 485, IEEE, manual

Number of calibration setpoints

20 max

Minimum system requirements

133 Mhz Pentium

32 MB RAM

10 Mo available disk space

Microsoft Windows 95, 98, NT, 2000, XP

Microsoft Word 2000



ACCREDITATION
N°2.1524 ÉLECTRICITÉ-
MAGNÉTISME

ACCREDITATION
N°2.1525 TEMPÉRATURE

AOIP Head Office

BP 182 - 91133 Ris Orangis Cedex France

Phone : +33 1 69 028 900

Fax : +33 1 69 020 599

e-mail : export@aoip.com

www.aoip.com